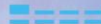
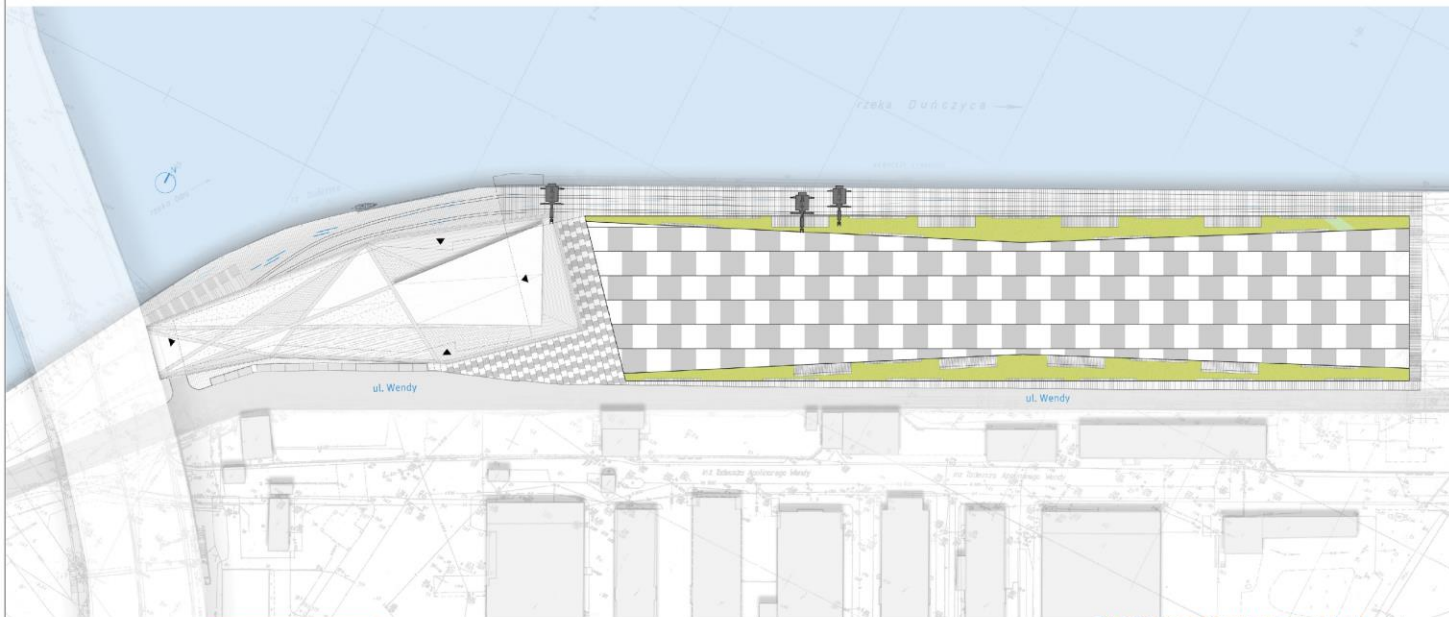




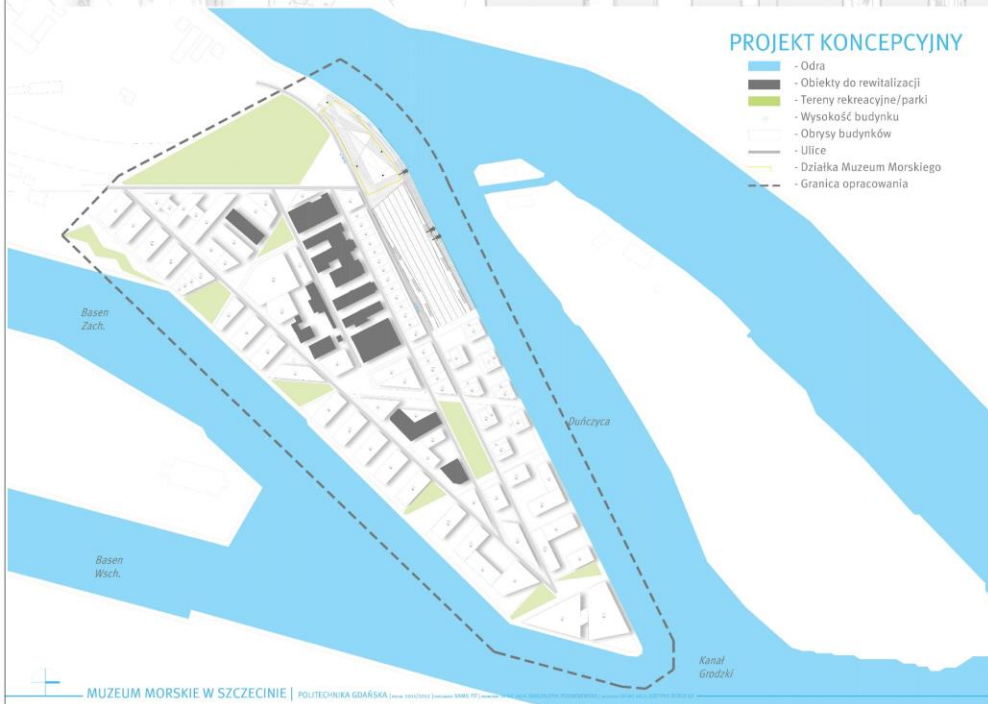
MUZEUM MORSKIE W SZCZECINIE





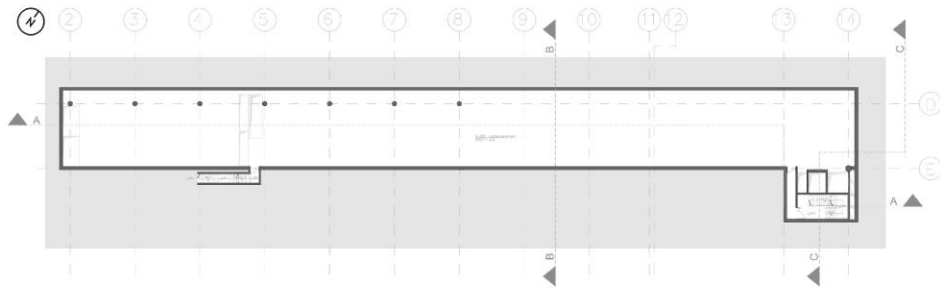
ZAGOSPODAROWANIE TERENU | skala 1:500

INSPIRACJE DLA ZAGOSPODAROWANIE TERENU

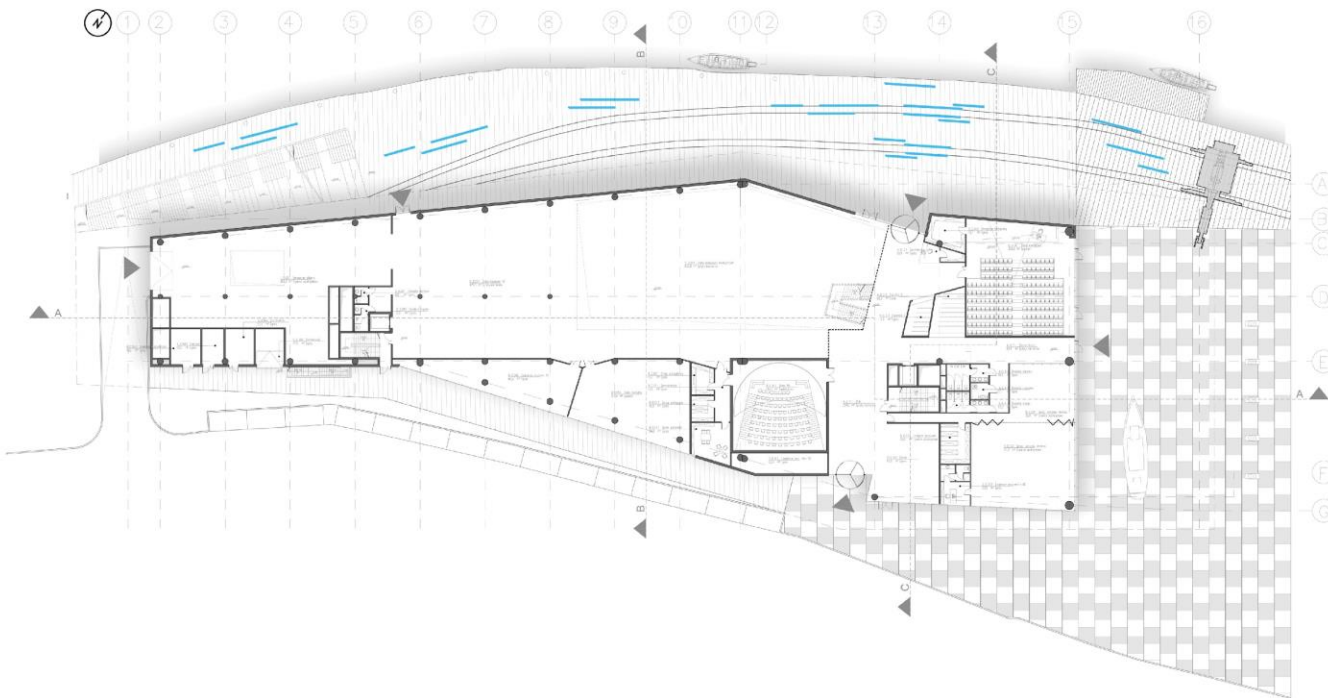


INSPIRACJE NA WYKOŃCZENIE ELEWACJI

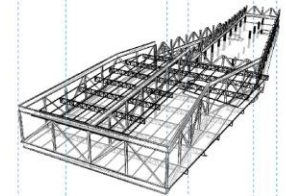
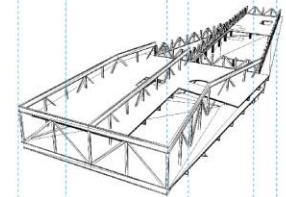
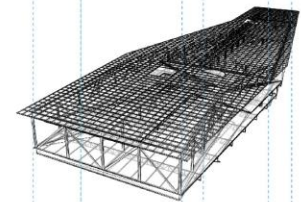
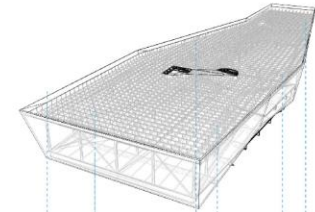


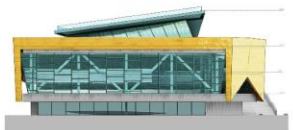


POZIOM -1 | skala 1:250



POZIOM 0 | skala 1:250





ELEWACJA WSCHODNIA | skala 1:500



ELEWACJA ZACHODNIA | skala 1:500



ELEWACJA POŁUDNIOWA | skala 1:500



ELEWACJA POŁNOCNIA | skala 1:500

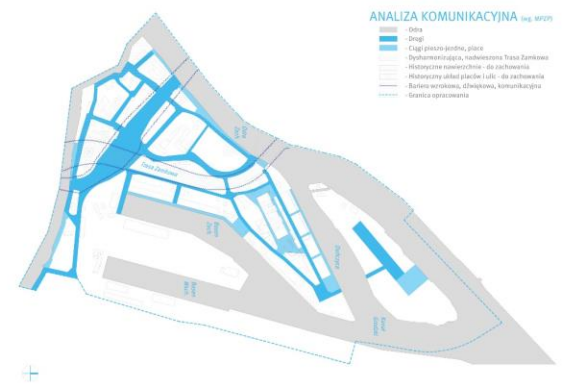
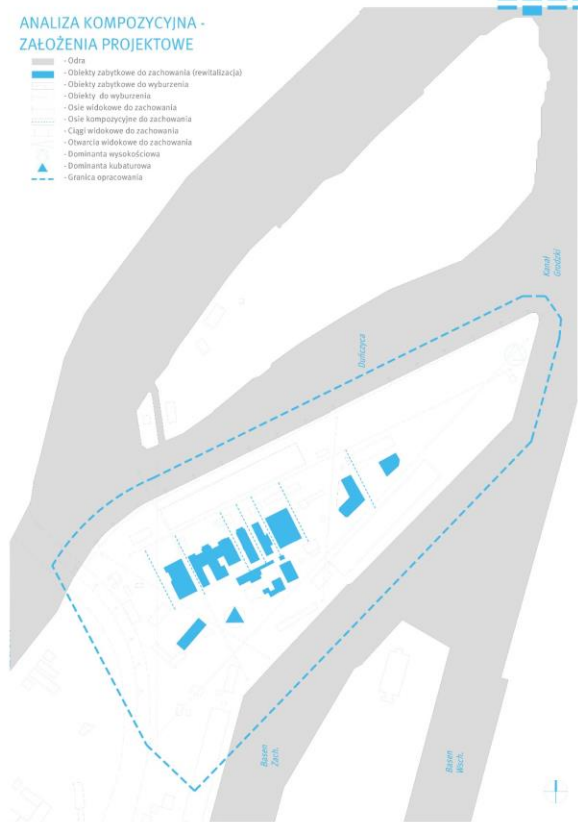
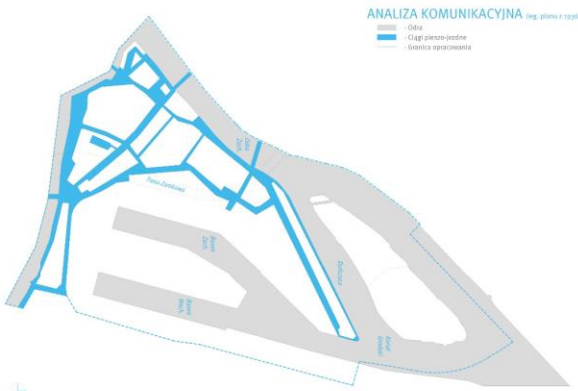
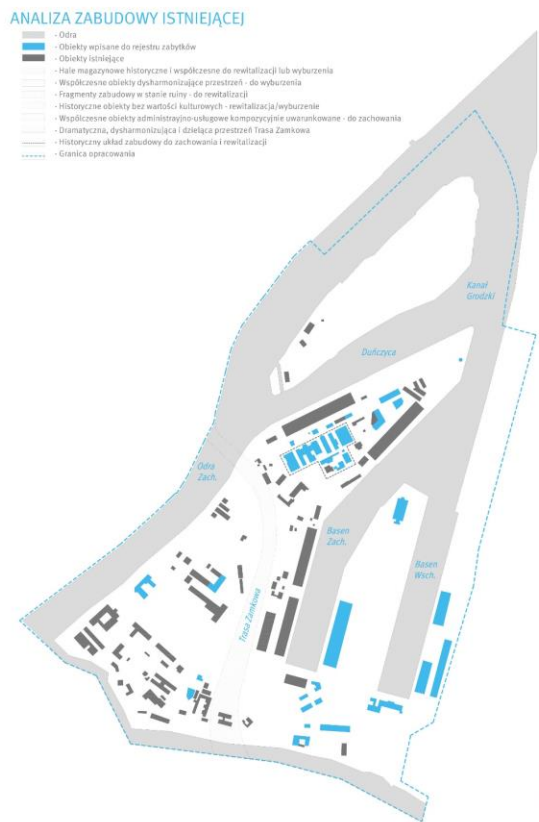
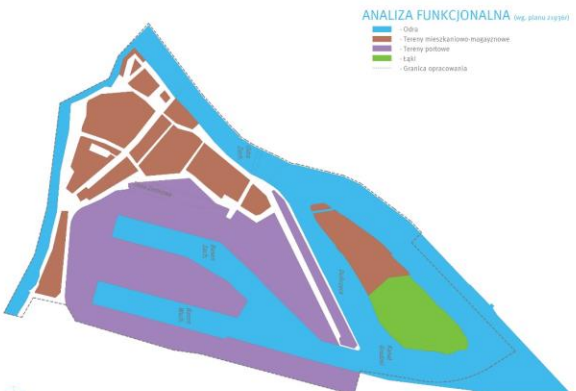


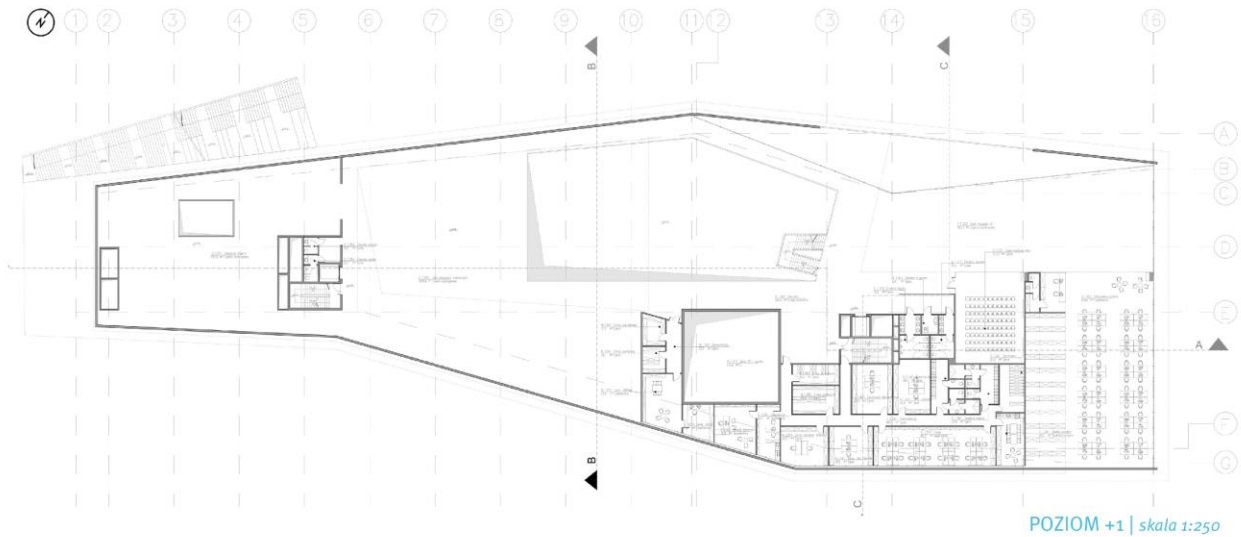


MUZEUM MORSKIE W SZCZECINIE

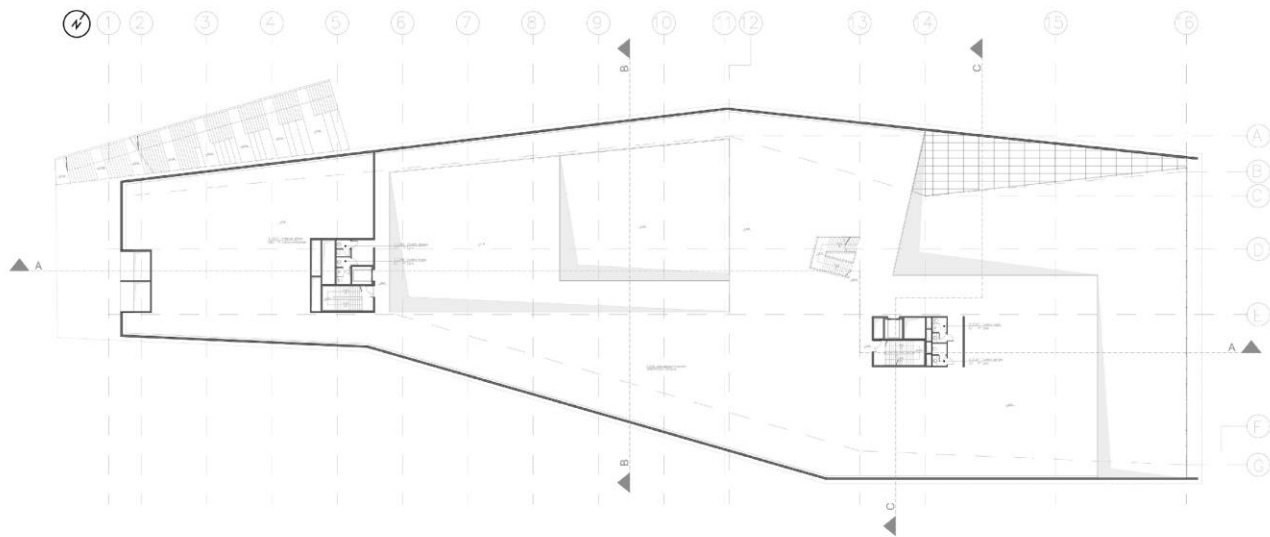
DYPLOMANT: KAMILU FIT | PROMOTOR: DR INŻ. ARCH. MAGDALENA PODWOJEWSKA | REZERWANT: DR INŻ. ARCH. JUSTYNA BUNICKI | WOP-PIK ZIELONOSI



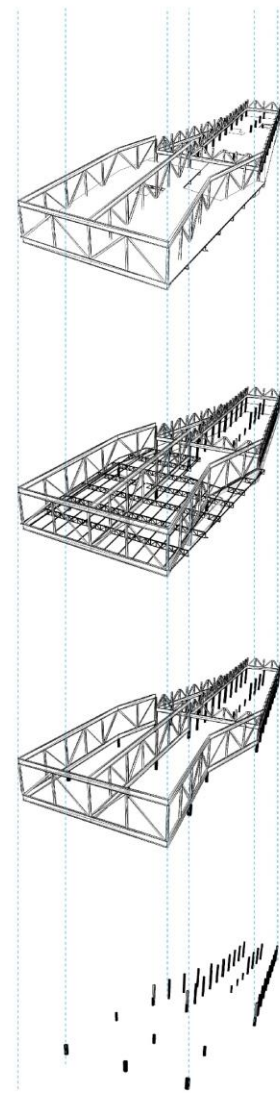




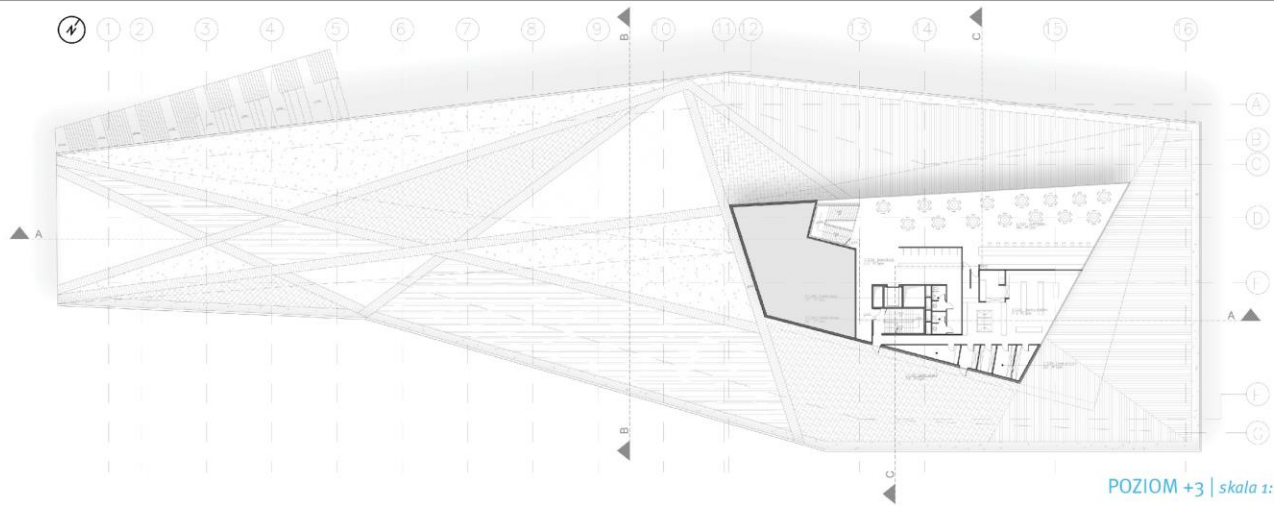
POZIOM +1 | skala 1:250



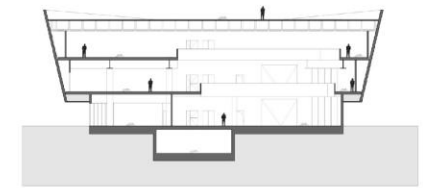
POZIOM +2 | skala 1:250



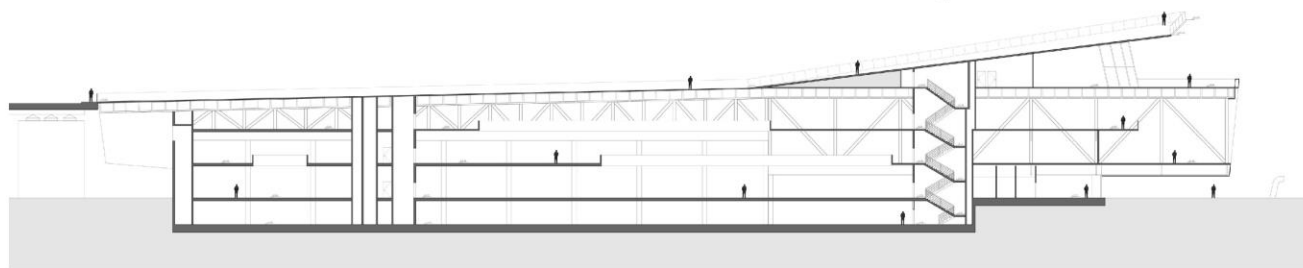
SCHEMAT KONSTRUKCJI BUDYNKU



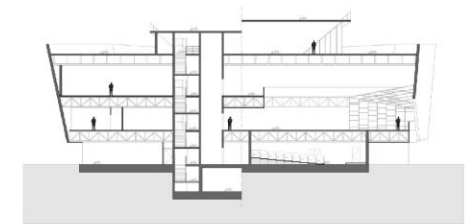
POZIOM +3 | skala 1:250



PRZEKRÓJ B-B | skala 1:250



PRZEKRÓJ A-A | skala 1:250



PRZEKRÓJ C-C | skala 1:250

